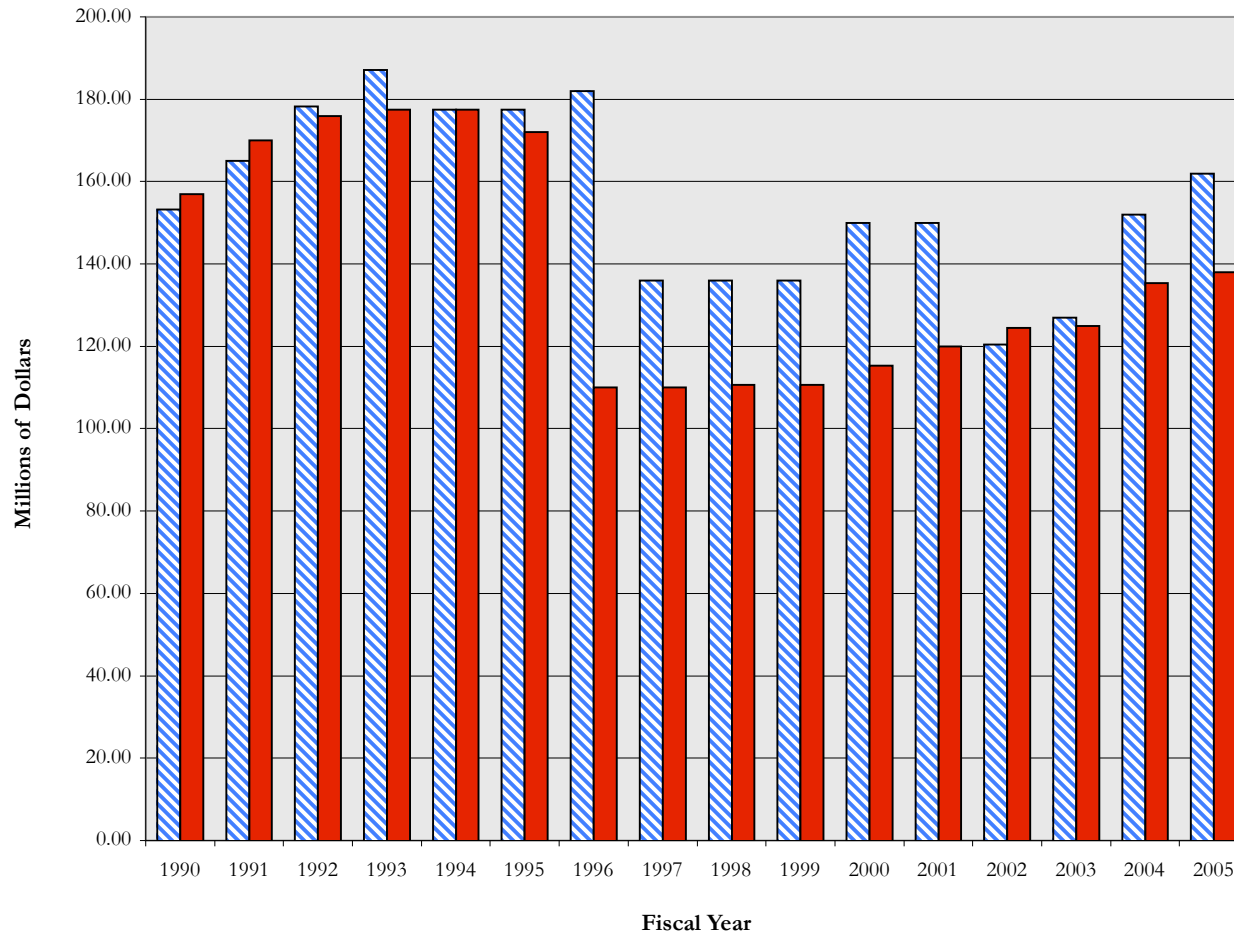


National Endowment for the Humanities

Comparison, President's Budget Request to Final Appropriation
Fiscal Years 1990-2005



Fiscal Year	Budget Request	Final Approp.	Comparison, Final Approp. to Prev. FY
1990	153.25	156.91	N/A
1991	165.00	170.00	13.1
1992	178.20	175.95	6.0
1993	187.06	177.41	1.5
1994	177.49	177.49	0.1
1995	177.49	172.00	-5.5
1996	182.00	109.98	-62.0
1997	136.00	110.00	0.0
1998	136.00	110.70	0.7
1999	136.00	110.68	0.0
2000	150.00	115.26	4.6
2001	150.00	120.00	4.7
2002	120.50	124.50	4.5
2003	126.89	124.94	0.4
2004	152.00	135.31	10.4
2005	162.00	138.06	2.7
2006	138.06	N/A	N/A

▨ Budget Request
■ Final Appropriation